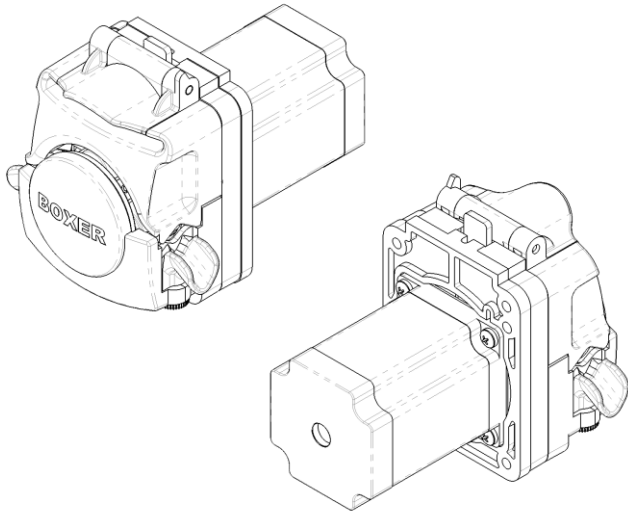
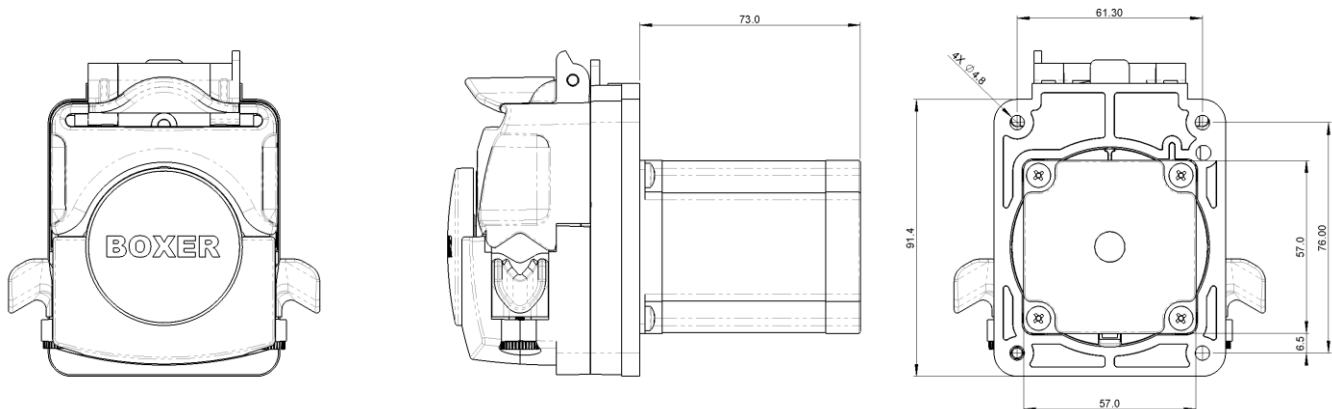


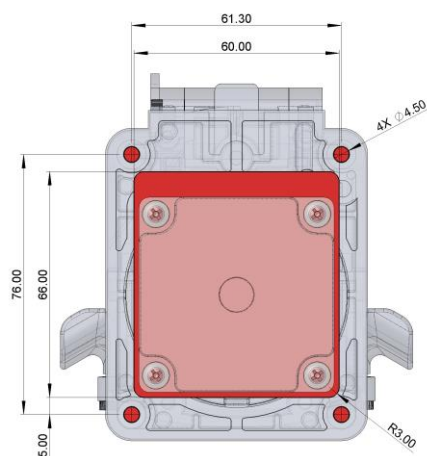
BOXER 25K Peristaltic Pump: Assembly Information



Mounting holes:

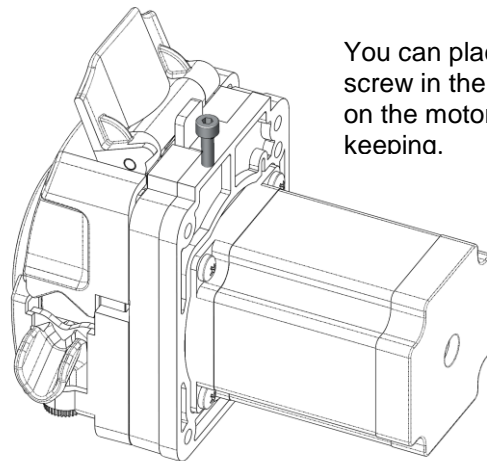
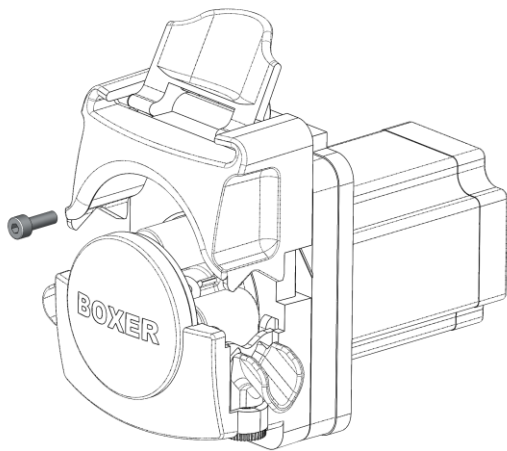
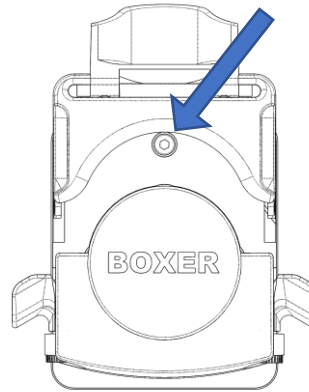
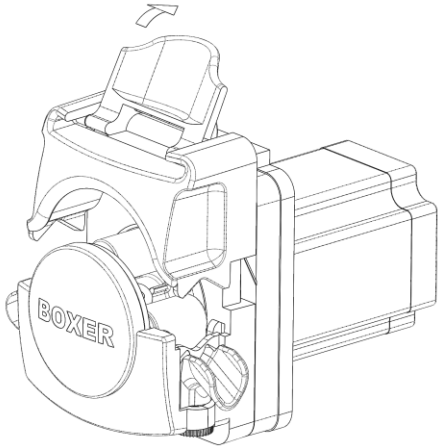


Suggested sheet metal mounting cut-out:



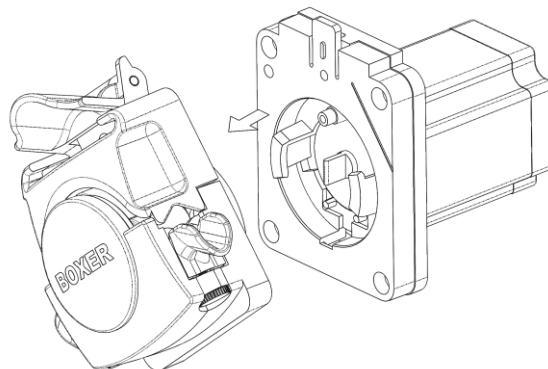
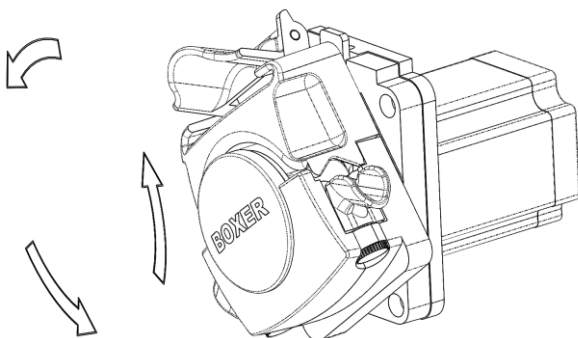
To remove the pump head:

1. Open the tube clamp lever completely
2. Using AF2.5mm Allen key to remove the M4 socket head locking screw



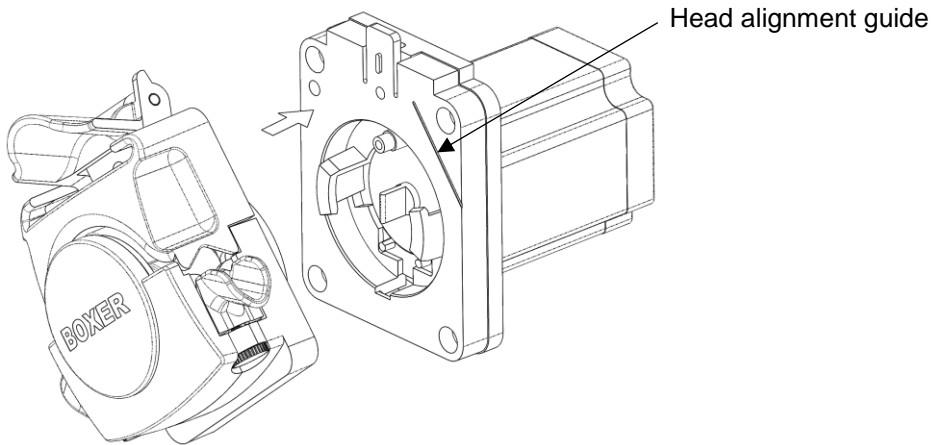
You can place the M4 screw in the provided space on the motor gasket for safe keeping.

3. Move the lever in the direction of closing but not completely close.
4. Rotate the head anticlockwise until stop and pull towards you



To reassemble the pump head:

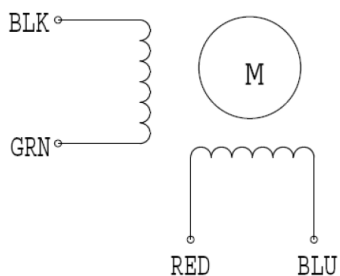
1. When reassembling the head follow the same steps in reverse. The head alignment guide on the motor plate will help you to align the head in the correct angle before pushing it back onto the motor plate and locking it into position.



NEMA 23 Stepper Motor characteristics:

General specifications		Electrical specifications	
Step Angle (°)	1.8	Rated Voltage (V)	3.2
Temperature Rise (°C)	80 Max (rated current, 2 phase on)	Rated Current (A)	2.8
Ambient Temperature (°C)	-20 ~ +50	Resistance Per Phase (± 10% Ω)	1.13
Number of Phase	2	Inductance Per Phase (± 20% mH)	3.6
Insulation Resistance (MΩ)	100 Min (500VDC)	Holding Torque (N.cm)	189
Insulation Class	Class B		
Max.radial force (N)	75 (20mm from the flange)		
Max.axial force (N)	15		

● Wiring Diagram :



● Dimensions:
(unit=mm)

● Pull out torque curve :

VOLTAGE: 30VDC, CONSTANT CURRENT:2.8A, HALF STEP

